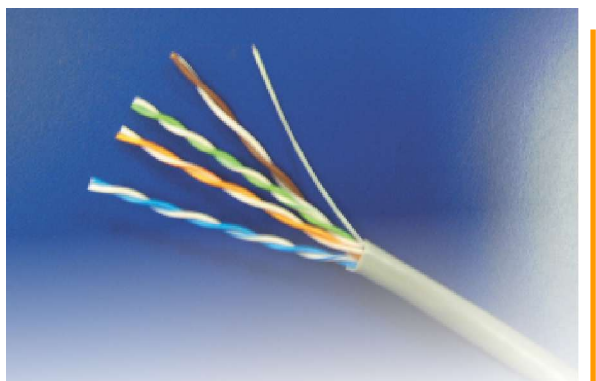


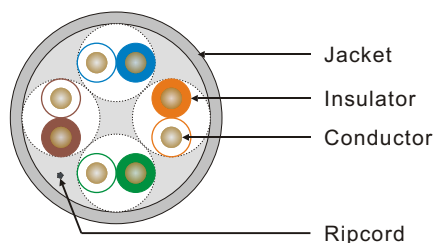
# Category 5

## 100 MHz UTP 五類電纜 (Solid)

LEAD FREE



High performance ANSI/TIA/EIA 568A compliant Category 5 UTP cables for mission-critical LAN applications or Structured Cabling Systems at affordable prices.



### Application

- >> 10 Base T (IEEE 802.3)
- >> Fast Ethernet (IEEE 802.3u)
- >> 100 Vg-AnyLAN (IEEE 802.12)
- >> Token Ring (IEEE 802.5)
- >> TP-PMD (ANSI X3T9.5)
- >> 100 Mbps CDDI
- >> ATM 155

### Industry Standard

- >> UL/CSA Listed CM, CMR
- >> UL and ETL Verified to ANSI/TIA/EIA 568A Category 5
- >> ISO/IEC-11801

### Product Description

- >> Conductor: 24 AWG Bare Solid Copper
- >> Insulation: HDPE, FRPE, FEP
- >> Ripcord: Under Jacket Jacket: FRPVC

### Product Electrical Characteristics

- >> Impedance : 100+/- 15 ohm
- >> Mutual Capacitance, Max.nf/1000ft : 17.1
- >> DC Resistance, Max.Ohms/1000ft : 28.6
- >> DC Resistance Unbalance of a pair : 5% max.
- >> Capacitance Unbalance (Pair to Ground) : 330pf/ 100m max.
- >> Propagation Delay Skew : 45ns/ 100m
- >> Normal Velocity of Propagation : Plenum FEP insulated 69%  
Non-Plenum insulated 66%

Frequency MHz	SRL (dB) min	Impedance ohm	Attenuation Max		Worst Pair NEXT Min. dB
			dB/100M	dB/1000ft	
0.772		100+/- 15	1.8	5.5	70
1	26	100+/- 15	2.0	6.1	68
4	26	100+/- 15	4.1	12.5	59
8	26	100+/- 15	5.8	17.7	54
10	26	100+/- 15	6.5	19.8	53
16	26	100+/- 15	8.2	25	50
20	26	100+/- 15	9.3	28.3	48
25	25	100+/- 15	10.4	31.7	47
31.25	24	100+/- 15	11.7	35.7	45
62.5	21	100+/- 15	17.0	51.8	41
100	19	100+/- 15	22.0	67.1	38

Address : Unit D, 12/F., Candy Novelty House,  
164 Wai Yip Street, Kwun Tong, H.K.  
Tel. : (852) 2508 0272  
Fax. : (852) 2508 0372  
E-mail : info@prolog.com.hk  
URL : www.prolog.com.hk



普洛系統有限公司  
PROLOG SYSTEMS LIMITED