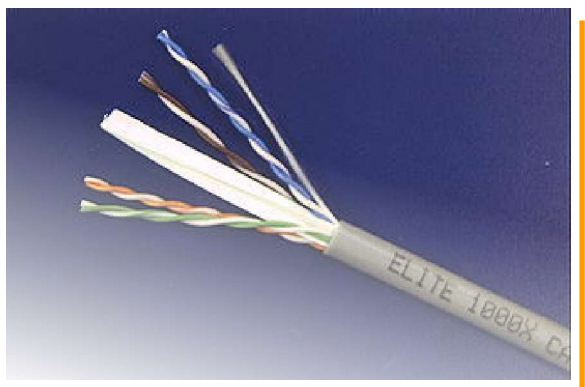


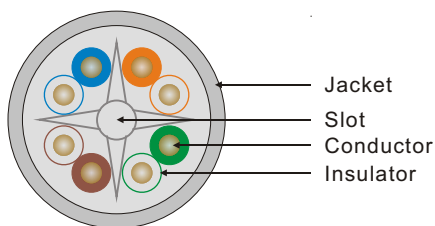
Category 6

250 MHz UTP 六類電纜 (Solid)

LEAD FREE



The general difference between category 5e and category 6 is in the transmission performance, and extension of the available bandwidth from 100MHz for category 5e to 250MHz for category 6, this includes better insertion loss, near end crosstalk (NEXT), return loss, and equal level far end crosstalk (ELFEXT). These improvements provide a higher signal-to-noise ratio, allowing higher reliability for current applications and higher data rates for future applications.



Application

- >> Gigabit Ethernet
- >> ATM 622 or higher
- >> Broadband Video (77 Channels 550 MHz)

Industry Standard

- >> UL/CSA Listed CM, CMR
- >> UL, ETL Verified to ANSI/TIA/EIA 568B Category 6
- >> ISO/IEC-11801

Product Electrical Characteristics

>> Impedance	:	100+/- 15 ohm
>> Mutual Capacitance, Max.nf/1000ft	:	17.1
>> DC Resistance, Max.Ohms/1000ft	:	28.6
>> DC Resistance Unbalance of a pair	:	5% max.
>> Capacitance Unbalance (Pair to Ground)	:	330pf/ 100m max.
>> Propagation Delay Skew	:	45ns/ 100m
>> Normal Velocity of Propagation	:	66%

Product Description

- >> Conductor: 24 AWG Bare Solid Copper
- >> Insulation: HDPE, FRPE
- >> Jacket: FRPVC

Frequency MHz	Attenuation Max dB/100M	Power SIn NEXT dB/100M	Equal level Far-End Cross Tak (ELFEXT) dB/100M
0.772	1.8	74.0	70.0
1	2.0	72.3	67.8
4	3.8	63.3	55.8
8	5.3	58.8	49.7
10	6.0	57.3	47.8
16	7.6	54.2	43.7
20	8.5	52.8	41.8
25	9.5	51.3	39.8
31.25	10.7	49.9	37.9
62.5	15.4	45.4	31.9
100	19.8	42.3	27.8
200	29.0	37.8	21.8
250	32.8	36.3	19.8

Address : Unit D, 12/F., Candy Novelty House,
164 Wai Yip Street, Kwun Tong, H.K.
Tel. : (852) 2508 0272
Fax. : (852) 2508 0372
E-mail : info@prolog.com.hk
URL : www.prolog.com.hk



普洛系統有限公司
PROLOG SYSTEMS LIMITED