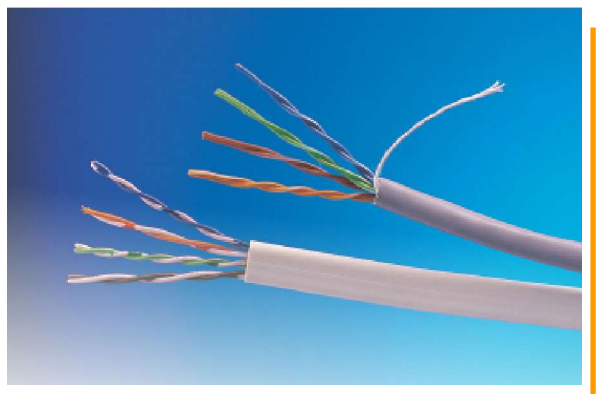


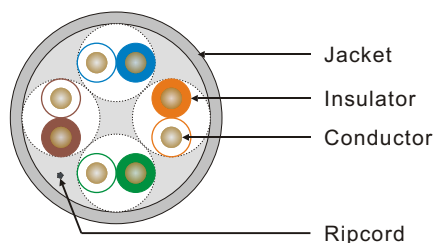
Enhanced Category 5

100 MHz UTP 超五類電纜 (Solid)

LEAD FREE



High performance ANSI/TIA/EIA 568B, 2 compliance Category 5e UTP cables for mission-critical LAN applications or Structured Cabling Systems at affordable prices.



Application

- >> 10 Base T (IEEE 802.3)
- >> 100 Base T (IEEE 802.3u)
- >> 100 Vg-AnyLAN (IEEE 802.12)
- >> Token Ring (IEEE 802.5)
- >> TP-PMD (ANSI X3T9.5)
- >> 100 Mbps CDDI
- >> ATM 155

Industry Standard

- >> UL/CSA Listed CM, CMR
- >> UL, ETL and 3P Verified to ANSI/TIA/EIA 568B-B.2 Category 5 ENHANCED
- >> ISO/IEC-11801

Product Description

- >> Conductor: 24 AWG Solid Copper
- >> Insulation: HDPE, FRPE, 100% FEP
- >> Ripcord: Under Jacket Jacket: FRPVC

Product Electrical Characteristics

- >> Impedance : 100+/- 15 ohm
- >> Mutual Capacitance, Max.nf/1000ft : 17.1
- >> DC Resistance, Max.Ohms/1000ft : 28.6
- >> DC Resistance Unbalance of a pair : 5% max.
- >> Capacitance Unbalance (Pair to Ground) : 330pf/ 100m max.
- >> Propagation Delay Skew : 45ns/ 100m

Frequency MHz	ATT MAX dB/100m	NEXT MIN dB	ACR MIN dB	PS. NEXT MIN dB	PS. ACR MIN dB	ELFEXT MIN dB/100m	PS. ELFEXT MIN dB/100m	RL MIN dB
1	2.0	65.3	63.3	62.3	60.3	63.8	60.8	20.0
4	4.1	56.3	52.2	53.3	49.2	51.7	48.7	23.0
8	5.8	51.8	46.0	48.8	43.0	45.7	42.7	24.5
10	6.5	50.3	43.8	47.3	40.8	43.8	40.8	25.0
16	8.2	47.3	39.1	44.3	36.1	39.7	36.7	25.0
20	9.3	45.8	36.5	42.8	33.5	37.8	34.8	25.0
25	10.4	44.3	33.9	41.3	30.9	35.8	32.8	24.3
31.25	11.7	42.9	31.2	39.9	28.2	33.9	30.9	23.6
62.5	17.0	38.4	21.4	35.4	18.4	27.8	24.8	21.5
100	22.0	35.3	13.3	32.3	10.3	23.8	20.8	20.1

Address : Unit D, 12/F., Candy Novelty House,
164 Wai Yip Street, Kwun Tong, H.K.
Tel. : (852) 2508 0272
Fax. : (852) 2508 0372
E-mail : info@prolog.com.hk
URL : www.prolog.com.hk



普洛系統有限公司
PROLOG SYSTEMS LIMITED